

APPROXIMATELY
1250' OF TRAIL
TO BE PAVED

PAVING
LIMITS

NOT TO SCALE



SIDNEY, OHIO 937.497.0200
LOVELAND, OHIO 513.239.8554
WWW.CHOICEONEENGINEERING.COM

PARKS TRAILS PAVING
CENTERVILLE-WASHINGTON PARK DISTRICT
HITHEREEN NEIGHBORHOOD PARK

REVISIONS:

FILE NAME
MOTWAS2002 HITHEREEN

DRAWN BY
RRB

CHECKED BY
MJH

PROJECT No.
MOTWAS2002

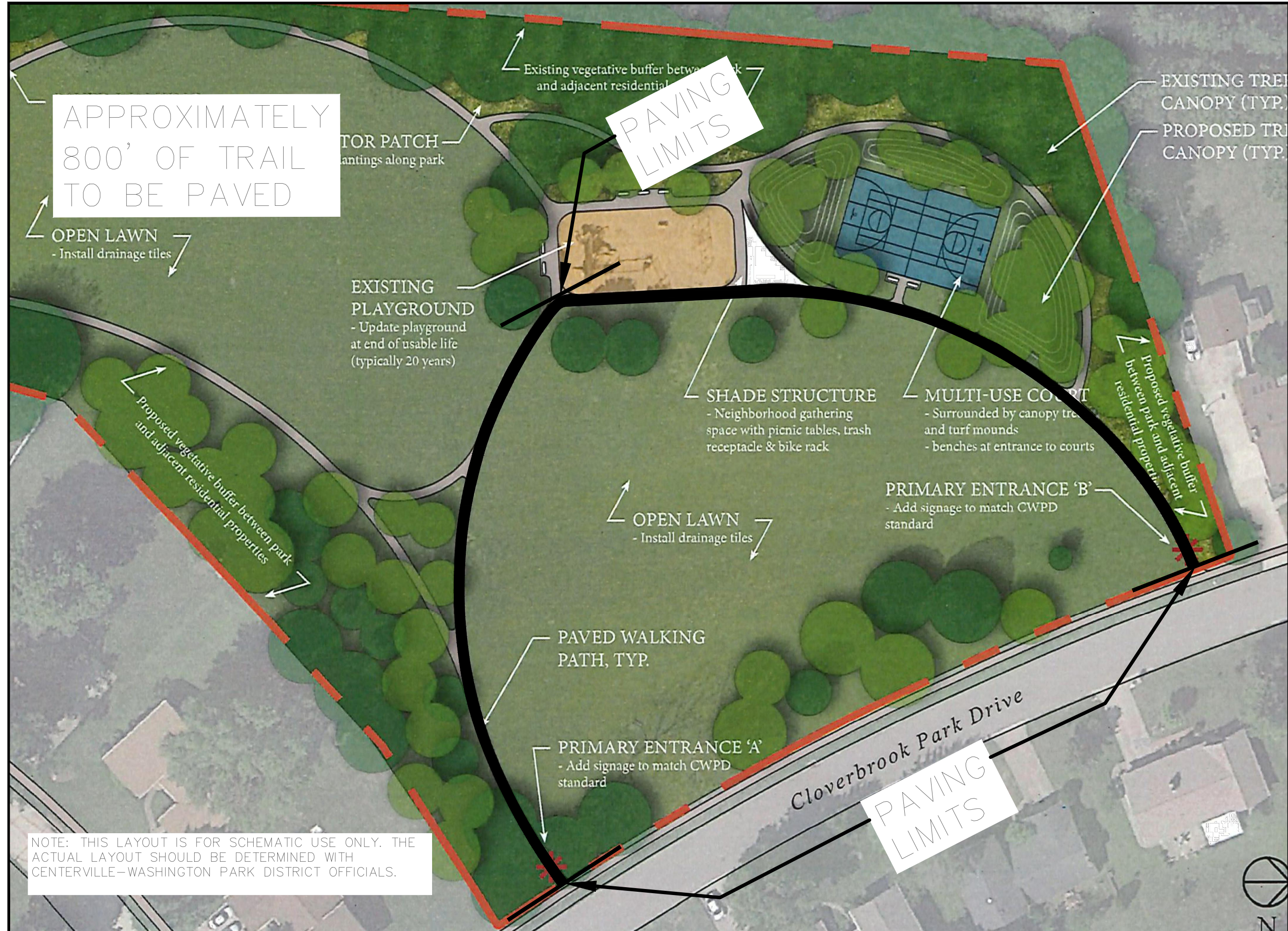
DATE
05-19-2020

SHEET NUMBER

4 OF 6



NOTE: THIS LAYOUT IS FOR SCHEMATIC USE ONLY. THE ACTUAL LAYOUT SHOULD BE DETERMINED WITH CENTERVILLE-WASHINGTON PARK DISTRICT OFFICIALS.



APPROXIMATELY
800' OF TRAIL
TO BE PAVED

PAVING
LIMITS

OPEN LAWN
- Install drainage tiles

EXISTING
PLAYGROUND
- Update playground
at end of usable life
(typically 20 years)

SHADE STRUCTURE
- Neighborhood gathering
space with picnic tables, trash
receptacle & bike rack

MULTI-USE COURT
- Surrounded by canopy trees
and turf mounds
- benches at entrance to courts

OPEN LAWN
- Install drainage tiles

PRIMARY ENTRANCE 'B'
- Add signage to match CWPD
standard

PAVED WALKING
PATH, TYP.

PRIMARY ENTRANCE 'A'
- Add signage to match CWPD
standard

Cloverbrook Park Drive

PAVING
LIMITS

NOTE: THIS LAYOUT IS FOR SCHEMATIC USE ONLY. THE
ACTUAL LAYOUT SHOULD BE DETERMINED WITH
CENTERVILLE-WASHINGTON PARK DISTRICT OFFICIALS.

NOT TO SCALE

REVISIONS:

FILE NAME
MOTWAS2002 CLOVERBROO

DRAWN BY
RRB

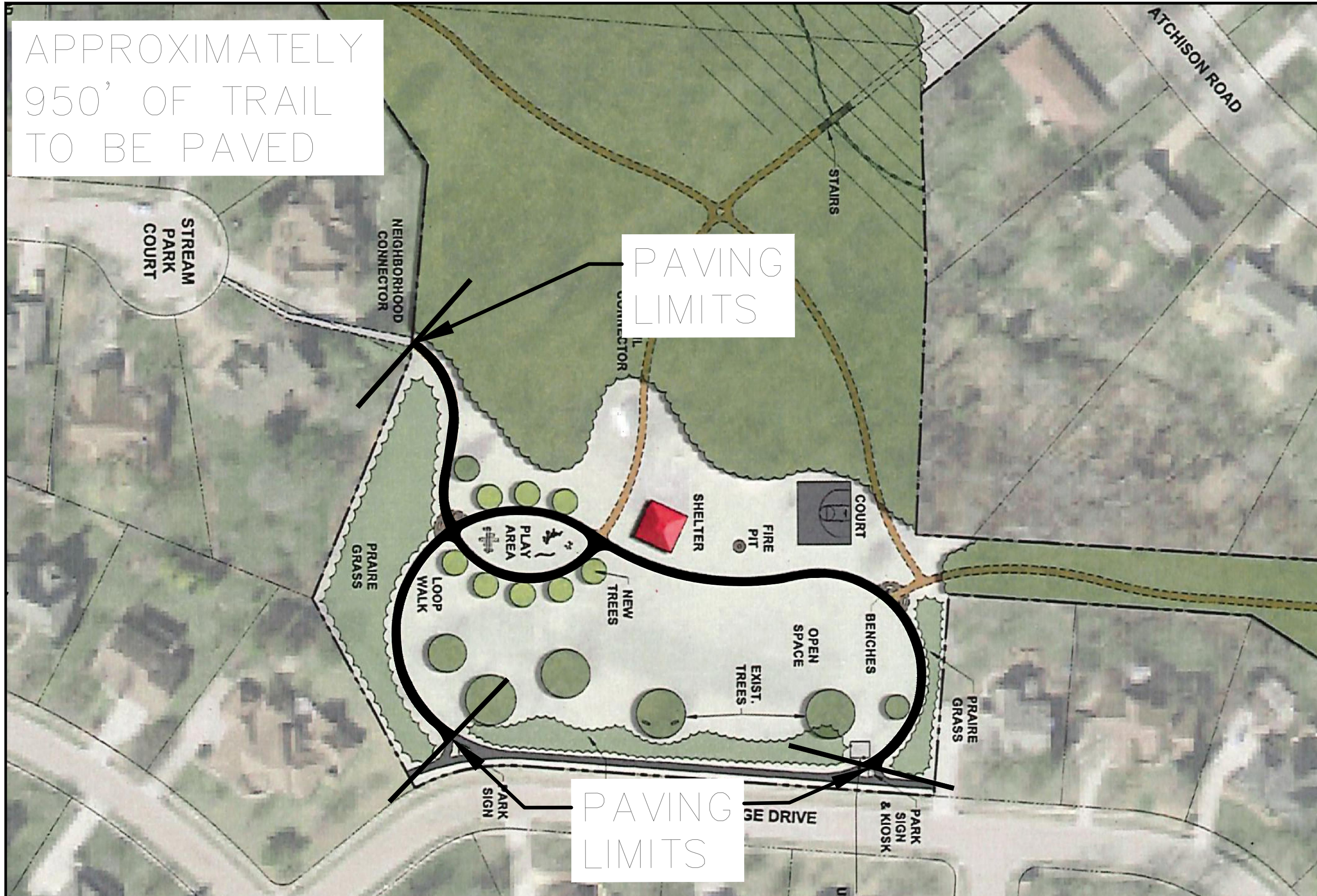
CHECKED BY
MJH

PROJECT No.
MOTWAS2002

DATE
05-19-2020

SHEET NUMBER
5 OF 6

APPROXIMATELY
950' OF TRAIL
TO BE PAVED



NOT TO SCALE



SIDNEY, OHIO 937.497.0200
LOVELAND, OHIO 513.239.8554
www.CHOICEONEENGINEERING.com

PARKS TRAILS PAVING
CENTERVILLE-WASHINGTON PARK DISTRICT
WILLOWBROOK PARK

REVISIONS:

FILE NAME
MOTWAS2002 WILLOWBROOK

DRAWN BY
RRB

CHECKED BY
MJH

PROJECT No.
MOTWAS2002

DATE
05-19-2020

SHEET NUMBER

6 OF 6

NOTE: THIS LAYOUT IS FOR SCHEMATIC USE ONLY. THE ACTUAL LAYOUT SHOULD BE DETERMINED WITH CENTERVILLE-WASHINGTON PARK DISTRICT OFFICIALS.